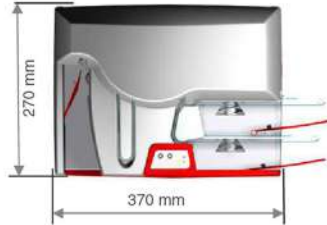


## AVAILABLE CONFIGURATION



SLE/SLP Double exit pockets 1 reject area



## SPEED PROCESSING

### DOCUMENT TYPE AND FORMAT

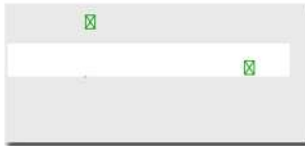
#### SLE/SLP Encoder

Document size: 153 mm / 6 pouces (Ex : US check)	<b>140 Documents / minute</b>
Document size: 175 mm / 7 pouces (EX : French Check)	<b>125 Documents / minute</b>
Document size: 205 mm / 8 pouces (EX: Indian Check)	<b>110 Documents / minute</b>

Speed based on full process: Reading + Front scanning + Encoding+ Endorsing + Back Scanning + sorting

## APPLICATIONS

### ✓ CHECKS & BANKING DOCUMENTS



- 1-MICR reading (CMC7/E13B)
- 2-Upstream front scanning
- 3 Encoding
- 4-Amount reading : ICR
- 5- Complementary informations reading : ICR
- 6-Signature availability checking
- 7-UV control
- 8-Back Endorsment
- 9-Downstream back scanning

## ASSOCIATED SOFTWARE

To be used, the reader scanner SLE/SLP must be controlled through an application software (VIPS supply, approved integrator or partner) installed on a PC

### 1-PROVIDED BY VIPS

- ✓ SITACH : Packaged software for checks & banking documents processing
- ✓ VIPSUITE : Modular and Adaptable software solution
- ✓ SPECIFIC DEVELOPMENT
- ✓ ACTIVIPS: Tool to developp the interface to drive the hardware with your own Software

### 2-PROVIDED BY PARTNER

- ✓ The Reader Scanner SLE interface simply via ACTIVIPS ( OCX Tool interface) with all software applications
- ✓ Web API interface accessed through TCP/IP on the LAN port of SLP



OUR EXPERTISE  
**TO SERVE**  
YOUR PERFORMANCE

Designer, manufacturer, seller of reader scanner & software publisher for automatic processing of banking documents, VIPS innovates to answer to the strategic stakes of its clients and partners for more than 25 years.

Through the widest range of solutions "packaged" or by developing solutions to meet specific needs, VIPS adapts and integrates its expertise, its knowledge & its technology to optimize the processes in place.

Major actor on our market, VIPS is active in all sectors that require the extraction, processing and retrieval of data. The information or data extracted can be legal, financial or informational.

### Global presence:

VIPS is present on international markets through its international subsidiary **VIPS International Development** directly with its customers or with local technical and sales partners.



Branch Transformation | Customer Experience | Digital Teller Automation | Self-service Solution  
Cash & Cheque Processing Solution | Digital Signage | RPA | Ergonomic Solution | Maintenance Service

<p>30+ YEARS OF EXPERIENCES</p>	<p>TRUSTED BY MAJOR COMPANIES ACROSS SECTORS</p>	<p>NATIONWIDE TECHNICAL SUPPORT WITH 100+ SERVICE POINTS AND 24/7 HELPDESK</p>	<p>CORE COMPETENCY IN CHEQUE PROCESSING AND DIGITAL TRANSFORMATION SOLUTIONS</p>	<p>SUPPORTED BY MORE THAN 700 DEDICATED STAFF AND TECHNICIANS</p>
---------------------------------	--	--	--	---

### JAKARTA (Head Office & Multisector Simulation Room)

Jl. Lingkar Luar Barat No.1, Jakarta Barat 11750, Indonesia  
 +62-21 584 1060  
 +62-21 587 4505

### BANDUNG

+62-22 205 63705  
 SURABAYA +62-31 593 0010  
 MEDAN +62-61 453 2994

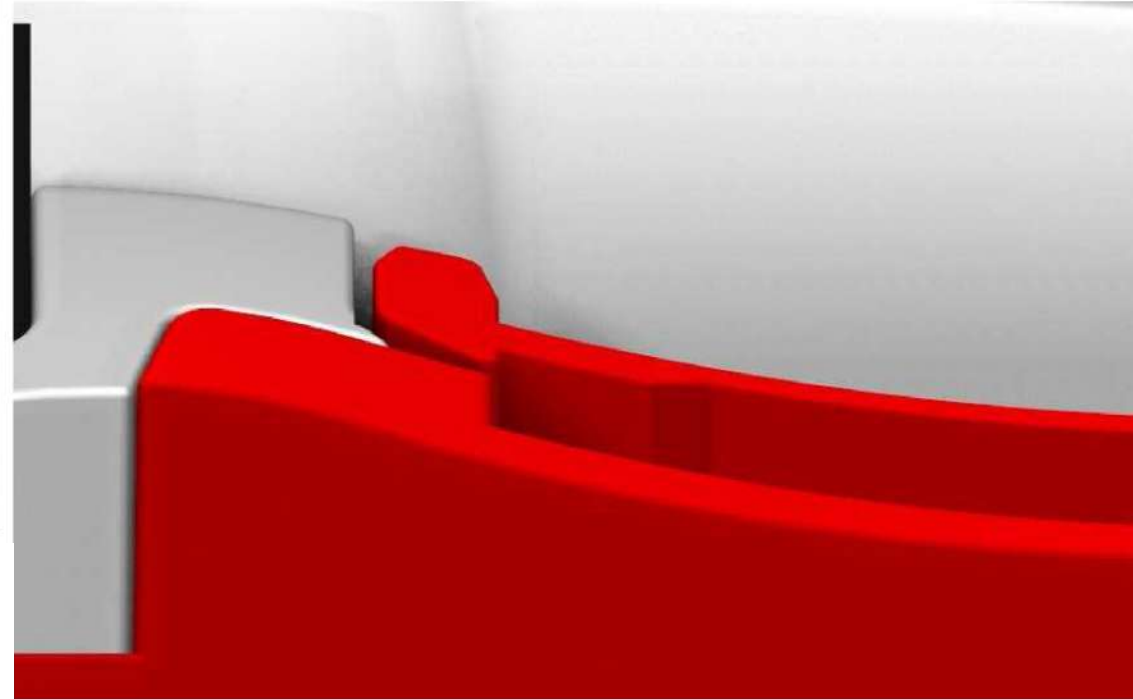
### YOGYAKARTA

+62-274 883 506  
 DENPASAR +62-361 499 323  
 SEMARANG +62-24 764 34391



☎ 1500 913 (Sales) ☎ 1500 013 (Helpdesk) ✉ info@murni.co.id

PT Murni Solusindo Nusantara ISO 9001:2015 Certified No. ID 14/02656




# SLE/SLP Range Encoder

SCANNER  
ENCODER

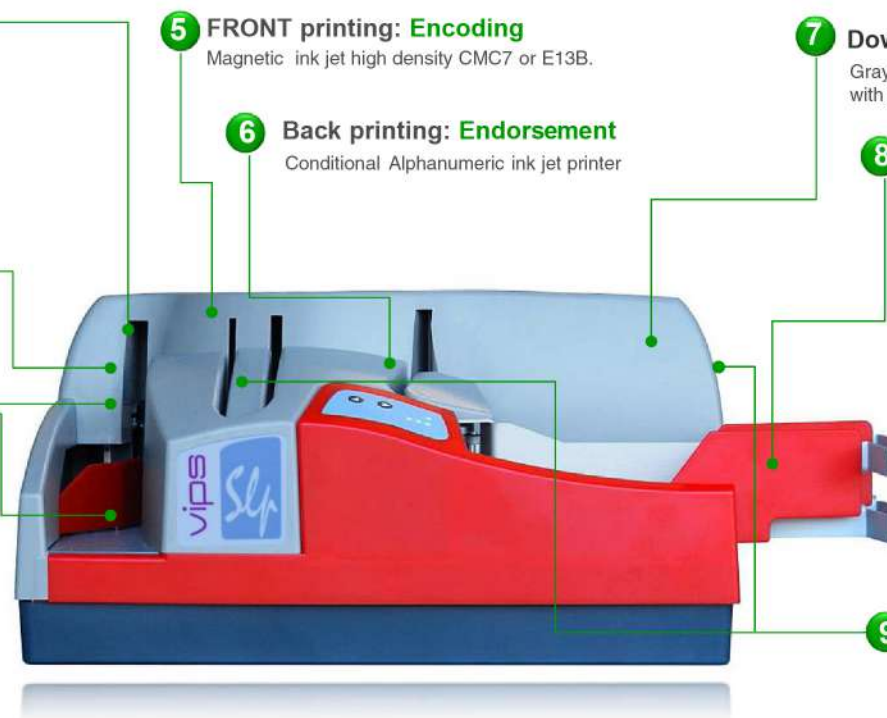
READER SCANNER ENCODER FOR BANK BRANCH


# SPECIFICATIONS



- 4 Upstream front scanner**  
Located at the beginning of processing, it allows in real time & without go and back :
  - ☑ Detect doctored document UV,IR
  - ☑ Optical Reading OCR / ICR / CAB /OMR
  - ☑ Built image for archive or video encoding
  - And also
    - ☑ Drive endorsement or/and printing
    - ☑ Drive sorting
- 3 Magnetic Reading**  
MICR E13B / CMC7 Reading head
- 2 Double feed detector**  
Ultra sonic technology
- 1 Advanced feeder with "IZIFID"**  


All in one : batch & one by one without adjustment. The feeding of documents "one hand" frees the operator and allows to ensure the refeeding from 1 to 200 documents without interrupting the processing. Designed to feed the documents "one by one" with the feature "automatic advance", the SLE/SLP makes easiest the processing of the isolated documents on counter.



- 5 FRONT printing: Encoding**  
Magnetic ink jet high density CMC7 or E13B.
- 6 Back printing: Endorsement**  
Conditional Alphanumeric ink jet printer
- 7 Downstream back scanner**  
Gray level or color after endorsement, the back image with your print is available.
- 8 Double exit pockets**  
With its two exit pockets with automatic adjustment, the SLE/SLP allows you to sort according to the document's type or to the reading information on the flow without reprocessing. It also allows you to eject the badly read documents or non conform without stopping the processing. Stop of the processing or "flip flop" start when one of the pockets is full and automatic restart after emptying the pocket.
 

Its technology with endless screw and belt allows a perfect stacking whatever the quality of documents, optimize stacking capacity and guarantees the quality of marking
- 9 Eject Area**  
Depending on the sorting plan and using of exit pockets, documents misread or do not comply are stopped and removed easily.

**BENEFITS**  
Both scanner & encoder  
Ink Jet Encoding  
Can be used at the counter  
ICT technology  
Versatility

The SLE/SLP is certainly the solution the smallest, quietest, most flexible of global market that integrates both the functionality of a "front office" branch scanner and those of an encoder. The SLE/SLP can be used without constraint in a bank and positioned at the counter.

## EFFICIENT TECHNOLOGY

- Full features inside**
- The SLE/SLP is developed and designed to fits the needs of "classical" processing of bank branches as well as mixed processing requiring encoding checks.
- The SLE/SLP includes :
- ☑ MICR reading (CMC7 or E13B)
  - ☑ Upstream front scanner
  - ☑ Doctored documents control
  - ☑ **ENCODING**
  - ☑ Back endorsement
  - ☑ Downstream back scanner
  - ☑ Two exit pocket s & one reject area

**Ready for future, the SLE/SLP protects your investment**  
With SLE/SLP you have a high value added solution that will adapt if your process or your needs changes, simply by enabling or disabling a feature available. If your needs change, the SLE/SLP will easily adapt to meet new challenges.



## EASE TO USE

Its easy and intuitive use ensures full membership and the immediate satisfaction of operators for fast and safe processing.

Without adjustment necessary, the SLE/SLP works indifferently and without upstream hand sorting all sizes and weights of paper.

## LOW OPERATING COST

### Quick access & Easier



**Maintenance without spare parts consumable \***  
Designed to minimize maintenance, the first level maintenance takes place **without change of spare parts and consumables**. Simple and made by the operator, reduces your maintenance and operating costs.

\* Exepted Ink

## CONTROL & SECURITY

### Greater control of documents

**UV, IR & transparency detection technology**

**vips** Image Control Technology VIPS is at the cutting edge of control technology, particularly with the "ICT" technology. This technology embedded in the SLE/SLP range (optional) allows to obtain up to 6 images in a spectrum of different colors and also by transparency. You can obtain upstream images of your documents for processing traditional grayscale or color images but also to detect any falsified documents or non-compliant.

### Checking & validation of reading MICR line

The result of reading of MICR line by the magnetic reading head may be doubled, in real time, by OCR reading produced by the scanner front of the SLE/SLP module.

### Ultra sonic Double feed detector

The ultrasonic technology, more constant and reliable than traditionnal technology allows the control of documents with size and weight mixed.

### Soft belt driven path

### Jam less and Documents always preserved

The SLE/SLP, in addition to the reliability its semi open path, always preserves, in case of jam, the integrity of your document with its soft belt driven technology.

## MAGNETIC INK JET ENCODING

### Unique know-how at the cutting edge of technology

VIPS has developed and integrated into its SLE/SLP range one encoding solution based on magnetic high density inkjet technology . This innovative technology, faster, more reliable and quieter than traditional technologies with inking ribbons improves the reliability of process, reduces production costs and makes easiest the consumable change

Your encoding is makes in an unbelievable silence thus allowing use in "front office". You are assured of precise marking in compliance with current standards.



## CONDITIONAL BACK ENDORSMENT

According to the information read , the document type recognized or programmatically in your application the SLE/SLP could automatically print or not, change text .

