

Free Standing Digital Signage

Stunning HD Display with Touchscreen

Glamourise your space and increase visitor engagement with these high definition screens.

Applicable for various type of premise, from shopping malls to universities, banks to hospitals, offices to hotels.



Why Digital Signage?

Current Trend & Statistic



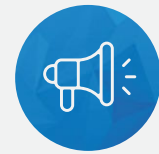
400%

Captures More Views than Static Displays



83%

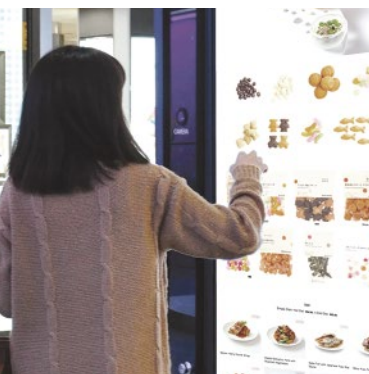
of Recall Rate (Higher than Any Other Media)



Has a **47.7%**

Effectiveness on Brand Awareness

Main Benefit of Using Digital Signage



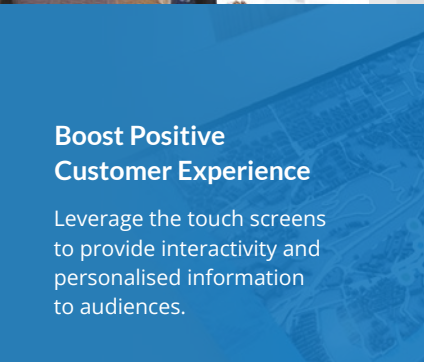
Highly Effective Marketing Tool for Products & Services

Increase your revenue with targeted & continuous display of advertisement.



Powerful Communication Channel with Audiences

Attract more audiences & boost awareness with provision of informative & captivating contents.



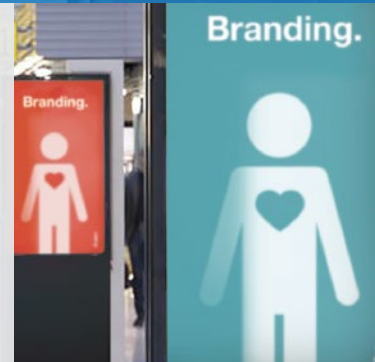
Boost Positive Customer Experience

Leverage the touch screens to provide interactivity and personalised information to audiences.



Enhanced Corporate Branding & Image

Through provision of strategically placed digital signage with personalised & professional display design.



Touchscreen Digital Signage Kiosk with All-in-One Computer & Display



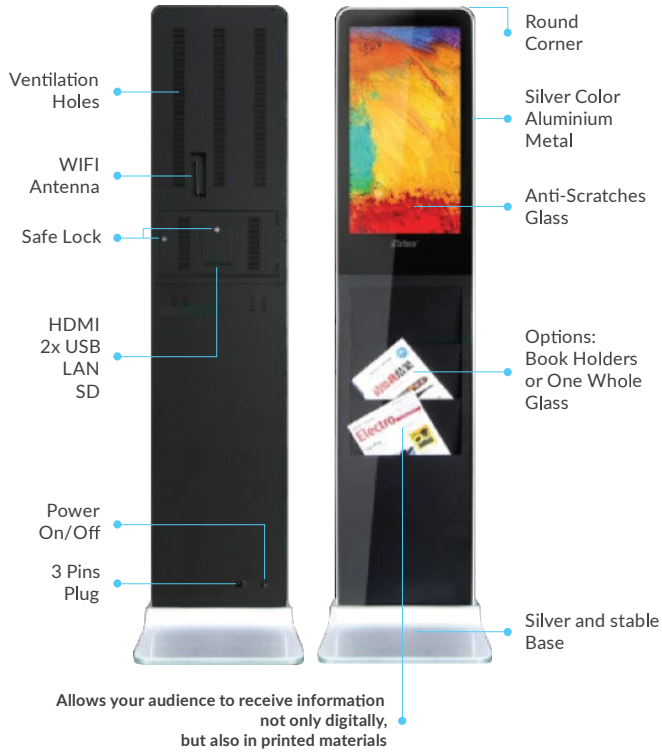
Model	220CBTPC	240CBTPC	320CBTPC	430CBTPC	490CBTPC	550CBTPC	650CBTPC
PANEL SPECIFICATIONS							
Panel Model	21.5 inch TFT LED	24inch TFT LED	32inch TFT LED	43inch TFT LCD	49inch TFT LCD	55inch TFT LED	65inch TFT LED
Max Resolution	1920 x 1080	1920 x 1080	1920 x 1080	1920 x 1080	1920 x 1080	1920 x 1080	1920 x 1080
Aspect Ratio	16 : 9	16 : 9	16 : 9	16 : 9	16 : 9	16 : 9	16 : 9
Pixel Pitch	0.24825*0.24825	0.27675*0.27675	0.36375*0.36375	0.4903*0.4903	0.53025*0.53025	0.63*0.63	0.744*0.744
Viewing Angle	89/89/89/89	89/89/89/89	89/89/89/89	89/89/89/89	89/89/89/89	89/89/89/89	89/89/89/89
Contrast Ratio	3000:1	3000:1	4000:1	1200:1	1000:1	1400:1	5000:1
Brightness	300cd/m	2300cd/m	2500cd/m	2500cd/m	2500cd/m	2500cd/m	2500cd/m2
Response Time	18ms	25ms	6.5ms	26ms	12ms	6ms	8ms
APPEARANCE							
Case Material	Metal Case	Metal Case	Metal Case	Metal Case	Metal Case	Metal Case	Metal Case
Case Color	White	White	White	White	White	White	White
Power Input	AC 100-240V						
Connectivity	LAN RJ45 Port • WIFI Built-In WIFI 802.11B/G/N • 3G (Optional) WCDMA						
Storage Temp	0-65 Degree						
Working Temp	0-50 Degree						
Storage Humidity	10-90%						
Working Humidity	10-90%						
Certificates	CE/FCC/ROHS						
PC SPECIFICATIONS							
CPU	Intel® Core® Processor I3						
Chipset	Intel® HM76						
Memory	4GB RAM, 120 GB SSD						
Storage	1* Serial ATA2 6Gb/s connectors • 1* Mini-SATA connector (SATA1 or MINI-SATA)						
Audio	Realtek ALC662						
Power Input	DC 12V						
Ethernet LAN	1*RTL8111E/8105E LAN						
Rear Panel	1*DC 12V IN port • 1*HDMI port • 1*VGA port • 1*RJ-45 port • 4* USB 2.0 ports • 2* Audio I/O ports (Mic and Line-out)						
Support OS	Windows 7/8/10, Linux						
Built-in Speakers	Yes						
Touch Screen	Options						

Commercial Free Standing Digital Signage with All-in-One Computer & Display



Model	320LBPC	430LBPC	490LBPC	550LBPC	650LBPC
PANEL SPECIFICATIONS					
Panel Model	32inch TFT LED	43inch TFT LED	49inch TFT LCD	55inch TFT LED	65inch TFT LED
Max Resolution	1920 x 1080	1920 x 1080	1920 x 1080	1920 x 1080	1920 x 1080
Aspect Ratio	16 : 9	16 : 9	16 : 9	16 : 9	16 : 9
Pixel Pitch	0.36375*0.36375	0.4903*0.4903	0.53025*0.53025	0.63*0.63	0.744*0.744
Viewing Angle	89/89/89/89	89/89/89/89	89/89/89/89	89/89/89/89	89/89/89/89
Contrast Ratio	4000:1	1200:1	1000:1	1400:1	5000:1
Brightness	400cd/m2	500cd/m2	500cd/m2	500cd/m2	500cd/m2
Response Time	6.5ms	26ms	12ms	6ms	8ms
Operation Temp	(0-50 Degree)	(0-50 Degree)	(0-50 Degree)	(0-50 Degree)	(0-50 Degree)
Panel Size	741.4x435.8x22.4mm	973x565.8x29mm	1096.2x632.5x29mm	1244.6x720.9mm	1450.5x828.5x30.8mm
Power Input	AC 100-240V				
Storage Temp	0-65 Degree				
Working Temp	0-50 Degree				
Storage Humidity	10-90%				
Working Humidity	10-90%				
Certificates	CE/FCC/ROHS				
PC SPECIFICATIONS					
CPU	Intel® Core® Processor I3				
Chipset	Intel® HM76				
Memory	4GB RAM, 120 GB SSD				
Storage	1* Serial ATA2 6Gb/s connectors • 1* Mini-SATA connector (SATA1 or MINI-SATA)				
Audio	Realtek ALC662				
Power Input	DC 12V				
Ethernet LAN	1*RTL8111E/8105E LAN				
Rear Panel	1*DC 12V IN port • 1*HDMI port • 1*VGA port • 1*RJ-45 port • 4* USB 2.0 ports • 2* Audio I/O ports (Mic and Line-out)				
Support OS	Windows 7/8/10, Linux				
Built-in Speakers	Yes				
Touch Screen	Options				

Commercial Free Standing Digital Signage with Brochure Holder



SPECIFICATIONS			
PANEL		CONNECTOR	
Panel Model	21.5inch TFT LED	USB 2.0	x2 3G SIM (Optional)
Max Resolution	1920x1080	HDMI (Output)	x1 x1
Aspect Ratio	16:09	SD	x1
Pixel Pitch	0.24825 x 0.24825	RJ45	x1
Viewing Angle	89/89/89/89	INTERNAL MEDIA PLAYER	
Contrast Ratio	3000:1		
Brightness	250cd/m2	CPU	Quad-core ARM Cortex-A9,1.6GHz
Response Time	18ms	GPU	ARM Mali-400MP4
Display Area (mm)	476.64 x 268.11mm	RAM	1/2GB DDR3
Panel Size(mm)	495.6 x 292.2 x 8.6m	ROM	8/16 G B Flash
Screen Weight	1.67Kg	OS	Android 4.4
Lamp Type	WLED		
CONNECTIVITY			
LAN	RJ45 Port, 10/100M Ethernet	3G (Optional)	WCDMA
WIFI	Built-in WiFi 802.11 B/G/N		
FILE SUPPORT			
Video	H.264, MKV, WMV9, MPEG 1/2/4, H D Divx, Xvid, RM/RMVB;		
Image	BMP / PNG / GIF / JPEG		
Audio	MP3, WMA, WAV, EAAC+, MP2 dec, Vorbis (Ogg), AC3, FLAC, APE, BSAC		
Scrolling Text	txt		
HDMI DISPLAY			
Output Mode	HDMI 480P, HDMI 576P, HDMI 720P 50Hz, HDMI 720P 60Hz, HDMI 1080I 50Hz, HDMI 1080I 60Hz, HDMI 1080P 24Hz, HDMI 1080P 50Hz, HDMI 1080P 60Hz		
DISPLAY MODE		ON-SCREEN DISPLAY LANGUAGES	
Portrait & Landscape		English, French, German, Italian, Polish, Russian, Simplified Chinese, Spanish, Turkish, Arabic, Japanese, Traditional Chinese etc.	
POWER		SOUND	
Mains Power	AC 100-240V, 50-60 Hz	Built-in Speakers	2x10W
Consumption	25 W		
DIMENSION & WEIGHT			
Machine Size	1562.5x40x350mm • 370x50x375mm(stand base)		
Machine Weight	21.3KG / 4.7 KG(stand base)		
Carton Size	1640 x 197 x 462 mm		
Carton Weight	38KG		
Wooden Case Size	1670 x 1015 x 492mm (5PCS)		
Wooden Case Weight	190KG		
OTHERS		ACCESSORIES	
Regulatory Approvals	CE, FCC, ROHS	Included	Remote Control, Power supply, User manual, Keys, Tools and Screws
Warranty	1 year warranty		



Branch Transformation | Customer Experience | Digital Teller Automation | Self-service Solution
Cash & Cheque Processing Solution | Digital Signage | RPA | Ergonomic Solution | Maintenance Service

<p>30+ YEARS OF EXPERIENCES</p>	<p>TRUSTED BY MAJOR COMPANIES ACROSS SECTORS</p>	<p>NATIONWIDE TECHNICAL SUPPORT WITH 100+ SERVICE POINTS AND 24/7 HELPDESK</p>	<p>CORE COMPETENCY IN PUBLIC INFORMATION DISPLAY & DIGITAL TRANSFORMATION SOLUTIONS</p>	<p>SUPPORTED BY MORE THAN 700 DEDICATED STAFF AND TECHNICIANS</p>
--	---	---	--	--

JAKARTA (Head Office & Multisector Simulation Room)
Jl. Lingkar Luar Barat No.1, Jakarta Barat 11750, Indonesia
P +62-21 584 1060
F +62-21 587 4505

BANDUNG +62-22 205 63705
SURABAYA +62-31 593 0010
MEDAN +62-61 453 2994

YOGYAKARTA +62-274 883 506
DENPASAR +62-361 499 323
SEMARANG +62-24 764 34391



1500913 (Sales) 1500013 (Helpdesk) info@murni.co.id PT Murni Solusindo Nusantara

ISO 9001:2015 Certified No. ID 14/02656