

ERGOTRON®

StyleView® Transfer Cart

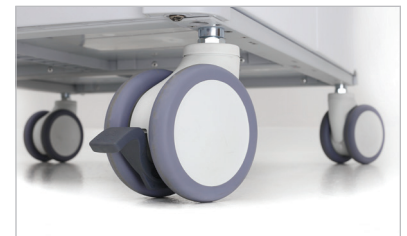


Highlights

- Extremely versatile: Supports 20 or more point-of-care carts depending on drawer configuration
- Superior maneuverability: 5-inch (13 cm) swiveling casters for easy movement over thresholds and floors; smooth push/pull action
- Secure access: Doors unlock electronically using programmable 5-digit PIN or via manual lock
- Flexible design adapts to your workflow: Shelves are removable and repositionable to support envelope drawer or other taller items; drawers may be accessed from either side of cart
- Top-cover designed to support work: 41-inch (105 cm) high surface is a convenient operational height when standing; raised edges prevent spills
- Smooth exterior surface with no exposed ribs for easy cleaning



For dependable and secure delivery of medication, this cart transports StyleView drawers from pharmacy to the patient floor. The generous capacity holds up to 120 small drawers or 40 large drawers, while the premium 5-inch (13 cm) casters move the cart with ease over thresholds and any floor type.



- Includes cart, 36 removeable shelves, 4 casters (two locking), scanner cup
- Drawers are not included. Use drawers from StyleView point-of-care carts and/or purchase drawers separately to match your workflow needs
- Compatible with drawers from SV41, SV42, SV43 and SV44 series carts. Not compatible with drawers from SV31 or SV32 series carts
- Shelves may be repositioned or removed to support different-size items
- There are up to 20 drawer shelves accessible from each side of cart, which accommodates up to 40 large drawers or 120 small drawers
- Top cover is designed to support up to 25 lbs (11.3 kg)
- Electronic lock powered by D-cell batteries. Expected life is 6–9 months. The #4 button on the keypad flashes when batteries are low
- Cart ships fully assembled (drawers not included)
- 5-inch (13 cm) bearing, dual casters require low user forces to move cart
- Accessories may be added to the cart via the t-slot channel located on either end of the cabinet. For example, an LX Wall Mount Arm with Laptop Tray may be attached using the SV T-Nut Kit (this configuration could provide convenient computer network access for technicians or nurses)
- Cart dimensions: 37.5" x 27.9" x 41.3" (95 x 71 x 105 cm)



StyleView Transfer Cart

Part # (color)	24-421-062 (white/grey)
Weight Capacity	≤ 80 lbs (36.3 kg) Maximum capacity of inner cabinet 80 lbs (36.3 kg), which includes weight of drawers and their contents
Shipping Dimensions	43.9" x 33.3" x 48.4" (111,5 x 84,5 x 123 cm)
Shipping Weight	283 lbs (128,5 kg)
Warranty	5 years

© 2014 Ergotron, Inc. rev. 11/03/2014/EA Literature made in US
Content is subject to change without notification

Americas Sales and Corporate Headquarters

St. Paul, MN USA
(800) 888-8458
+1-651-681-7600
www.ergotron.com
sales@ergotron.com

EMEA Sales

Amersfoort, The Netherlands
+31 33 45 45 600
www.ergotron.com
info.eu@ergotron.com

APAC Sales

Tokyo, Japan
www.ergotron.com
apaccustomerservice@ergotron.com

Worldwide OEM Sales

www.ergotron.com
info.oem@ergotron.com

ERGOTRON®

NORTEK A Nortek Company