

# ergotron®

*moving you forward*

## ***Glide Wall Mount***

- Lift, lower and tilt for the perfect picture and comfortable viewing
- Display/TV moves with only a light touch with patented CF technology
- Discreet mounting hardware nearly disappears
- Raise TV during standing activities; lower while sitting
- Display/TV mounts close to the wall and out of the way
- Lift n' Lock™ for quick installation
- Easy to use – simple installation and effortless operation
- Ratchet-free tilting

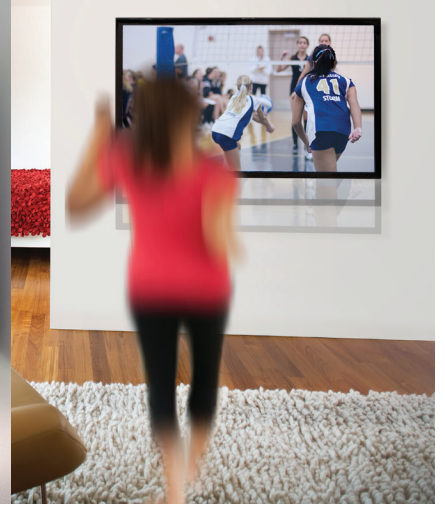


## GLIDE WALL MOUNT LD-X, HD AND VHD

Effortlessly lift, lower and tilt your large TV or display for the perfect picture and the most comfortable viewing. This revolutionary design delivers unprecedented height adjustability in an extremely low profile module and easily tilts up to 10° to alleviate glare. Our patented Constant Force (CF) technology lets you position your large display with a simple, light touch—move down for viewing while sitting and up for standing. The Glide Wall Mount is also ideal for gaming and entertaining.



# Glide Wall Mount



**LD-X (Light Duty with Extension)**

**HD (Heavy Duty)**

**VHD (Very Heavy Duty)**

Part # (color)	61-113-085 (black)	Americas, APAC: 61-061-085 (black)	61-128-085 (black)
Includes	Full-motion arm, lift assembly, VESA adapter, complete hardware kit	Low-profile lift module, mounting template, tilt brackets, installation and mounting hardware, cable management hardware	
Typical LCD Size	≤ 42" VESA monitor attachment: 100 x 100 mm to 400 x 400 mm	30–55"	46–63"
LCD SIZE IS APPROXIMATION. DIMENSION IS DIAGONAL MEASUREMENT OF SCREEN. LCD SIZE MAY BE EXCEEDED AS LONG AS SCREEN WEIGHT DOES NOT EXCEED MAXIMUM WEIGHT CAPACITY OF THE MOUNT.			
Weight Capacity	12–30 lbs (5,4–13,6 kg)	20–40 lbs (9,1–18,1 kg)	45–70 lbs (20,4–31,8 kg)
Lift	10" (25,4 cm)	18" (45,7 cm)	16" (40,6 cm)
Tilt	10°	10°	10°
Pan	180°	—	—
VESA	MIS-D/E/F	MIS-E/F Mounting holes spacing range: Horizontal 200 mm (min.) to 400 mm (max.) Vertical 100 mm (min.) to 400 mm (max.)	MIS-D/E/F Mounting holes spacing range: Horizontal 100 mm (min.) to 400 mm (max.) Vertical 100 mm (min.) to 400 mm (max.)
Mounting Profile	Nested 4.5" (11,4 cm), extended 11" (27,8 cm)	Distance from wall to back of display 2" (5 cm)	Distance from wall to back of display 2.5" (6,4 cm)
Shipping Weight	9.3 lbs (4,2 kg)	30 lbs (13,5 kg)	36.4 lbs (16,5 kg)
Shipping Dimensions	19.3" x 12.2" x 4.3" (49 x 31 x 11 cm)	32.25" x 18" x 5" (82 x 46 x 12,5 cm)	29" x 4" x 20.7" (77 x 11 x 54 cm)
Warranty	5 years		

Download additional resources at [ergotron.com](http://ergotron.com).

For more information:

USA & Canada: 800.888.8458 / +1.651.681.7600 / [insidesales@ergotron.com](mailto:insidesales@ergotron.com)

EMEA: +31.33.45.45.600 / [info.eu@ergotron.com](mailto:info.eu@ergotron.com)

APAC: [apaccustomerservice@ergotron.com](mailto:apaccustomerservice@ergotron.com)

LATAM: +1.800.681.1820 / [info.latam@ergotron.com](mailto:info.latam@ergotron.com)

Custom: [custom@ergotron.com](mailto:custom@ergotron.com)

© Ergotron, Inc. 03.03.2022

Literature made in the U.S.A.

Content subject to change.

Ergotron devices are not intended to cure, treat, mitigate or prevent any disease.

Patent information available at [www.ergotron.com/patents](http://www.ergotron.com/patents).

