

ergotron[®]

moving you forward

TRACE™ **Monitor Mount**

- Intuitive adjustment: Effortlessly follows your next move
- Adaptable workstyle: Easily transitions between individual tasks and collaboration
- More workspace: Lifts screens off the desktop from a compact base
- Stay organized: Integrated cable management reduces clutter
- Flexible design: Quickly converts to a single or dual monitor configuration
- Ergonomic fit: Encourages regular movement to support healthy working



EMBRACE THE NEXT MOVE



In evolving work environments, the innovative TRACE Monitor Mount embraces movement to shape individual work experiences. It adapts to the ergonomic needs of each employee to create agile workspaces at home or in the office that effortlessly shift between users and tasks to encourage healthy movement, productivity and a collaborative spirit.

TRACE™ Monitor Mount



Effortless adjustment with Constant Force™ Technology



Professional-grade quality testing for 15,000 cycles

CLAMP KITS



SLIM PROFILE
98-490-224 (MATTE BLACK)

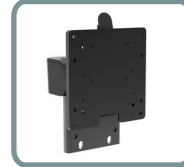


SLIM PROFILE
98-490-216 (WHITE)

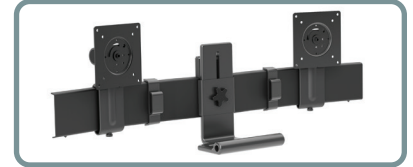


GROMMET
98-492-009 (MATTE BLACK)

CONVERSION KITS



SINGLE
47-109-224 (MATTE BLACK)



DUAL
47-110-224 (MATTE BLACK)



Single with Panel Clamp



Dual with Panel Clamp

| Part # (color) | 45-630-216 (white) 45-630-224 (matte black) | 45-631-216 (white) 45-631-224 (matte black) |
|--|---|--|
| Includes | Single mount, counter-balanced monitor pivot, quick attach, 2-piece mounting clamp, mounting hardware and tools | Dual mount, bow, monitor pivots (2), 2-piece mounting clamp, mounting hardware and tools |
| Typical LCD Size | 21.5–38" | 21.5–27" |
| <small>LCD SIZE IS APPROXIMATION. DIMENSION IS DIAGONAL MEASUREMENT OF SCREEN. LCD SIZE MAY BE EXCEEDED AS LONG AS SCREEN WEIGHT DOES NOT EXCEED MAXIMUM WEIGHT CAPACITY OF THE MOUNT.</small> | | |
| Weight Capacity | 6.5–21.5 lbs (2.9–9.8 kg) | 8.1–21.5 lbs (3.7–9.8 kg) |
| Lift | 11" (28 cm) | |
| Tilt | 80° ↑ 75° / ↓ 5° | |
| Pan | 240° | |
| Rotation | 360° | |
| VESA | MIS-D (75 x 75 mm, 100 x 100 mm) | |
| Extension | ≤ 15" (38.1 cm) | |
| Product Weight | 15.3 lbs (7 kg) | 19.5 lbs (8.9 kg) |
| Shipping Weight | 18.3 lbs (8.3 kg) | 25.5 lbs (11.6 kg) |
| Shipping Dimensions | 29.5" x 9.2" x 10.2" (75.1 x 23.4 x 26 cm) | 35.1" x 12" x 10.2" (89.3 x 30.4 x 26 cm) |
| Warranty | 15 years | |

Download additional resources at ergotron.com.

For more information:

USA & Canada: 800.888.8458 / +1.651.681.7600 / insidesales@ergotron.com

EMEA: +31.33.45.45.600 / info.eu@ergotron.com

APAC: apaccustomerservice@ergotron.com

LATAM: +1.800.681.1820 / info.latam@ergotron.com

Custom: custom@ergotron.com

© Ergotron, Inc. 05.05.2023

Literature made in the USA

Content subject to change.

Ergotron devices are not intended to cure, treat, mitigate or prevent any disease.

Patent information available at www.ergotron.com/patents.

