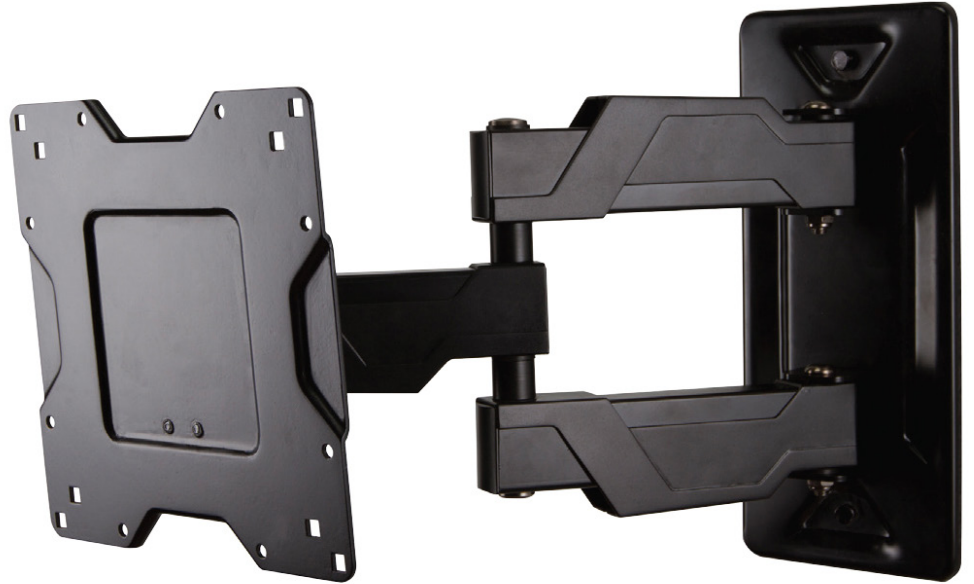


ergotron®

moving you forward

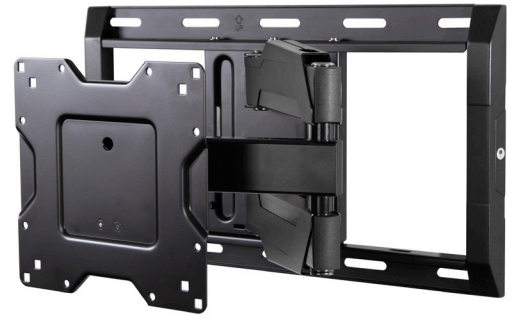
Neo-Flex® Cantilever, VHD Large Display or TV Mount

- Extends up to 14" (36 cm) from wall. Minimum profile is just 3.2" (8.2 cm)
- Tilt and pan for maximum viewing flexibility
- Includes adaptor for greater panel compatibility
- Integrated cable management and covers guide and hide cords
- Lift n' Lock™ allows you to easily attach your flat panel to the mount
- Two-tone design and modern aesthetic complements newer panels
- Built-in flat screen leveling



SEAMLESSLY INTEGRATE DISPLAYS IN HOME,
OFFICE AND COMMERCIAL ENVIRONMENTS

This low-profile full motion mount fits most 32"–63" flat panel monitors and TVs up to 80 lbs (36.3 kg) and is well-suited for those applications where seamless integration counts most. Extruded aluminum construction provides maximum support in a lightweight TV wall mount. Its thoughtful design provides ample throw and nests the display centered on the wall.



NEO-FLEX CANTILEVER, UHD
61-132-223

	Neo-Flex Cantilever, VHD	Neo-Flex Cantilever, UHD
Part # (color)	45-385-223 (black)	61-132-223 (black)
Includes	Wall plate, cantilever arm, monitor plate, cable management, spider 46 adapter*, complete hardware kit	Wall plate, full motion arm, monitor plate, cable management, spider 46 adapter*, complete installation hardware
Typical LCD size	≤ 63"	≤ 37"
<small>LCD SIZE IS APPROXIMATION. DIMENSION IS DIAGONAL MEASUREMENT OF SCREEN. LCD SIZE MAY BE EXCEEDED AS LONG AS SCREEN WEIGHT DOES NOT EXCEED MAXIMUM WEIGHT CAPACITY OF THE MOUNT</small>		
Weight Capacity*	≤ 80 lbs (36.3 kg)	≤ 120 lbs (54.4 kg)
Tilt	20°	16°
Pan	180°	180°
VESA	MIS-E/F (200 x 100 mm to 600 x 400 mm)	MIS-F (200 x 200 mm to 600 x 400 mm)
Product Weight	9.3 lbs (4.2 kg)	14.5 lbs (6.6 kg)
Shipping Dimensions	14.2" x 12.8" x 4.5" (36 x 33 x 11 cm)	23.2" x 12.8" x 4.5" (59 x 33 x 12 cm)
Shipping Weight	10.5 lbs (4.8 kg)	16.6 lbs (7.5 kg)
Warranty	3-years	

*If adapter is used, add 0.2" (6 mm) to minimum profile and maximum extension

